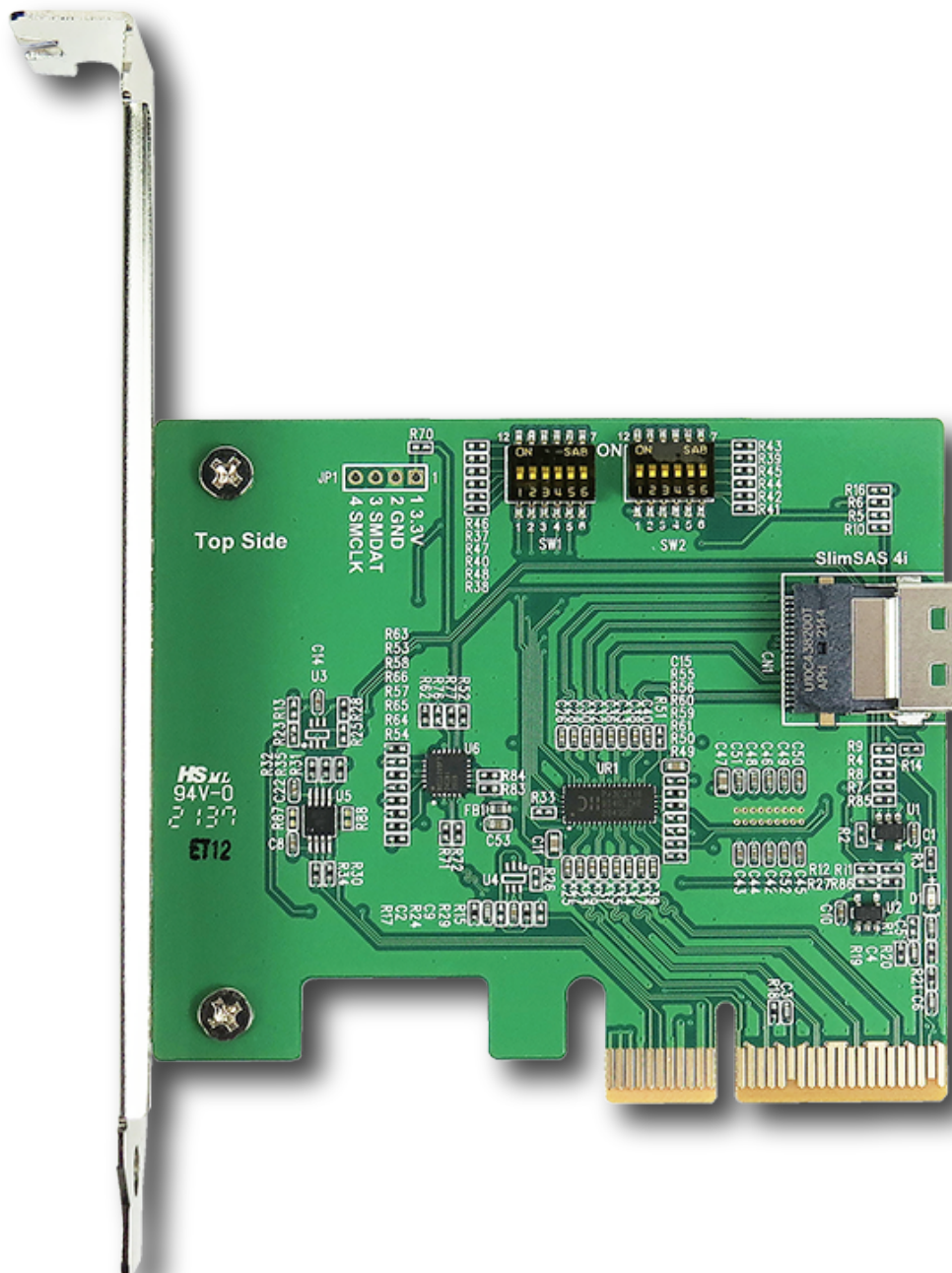


Innocard

Minerva

DP9402

PCIe x4 Gen4 with ReDriver to SlimSAS 4i (SFF-8654) AIC



PCIe x4 Gen4 with ReDriver to SlimSAS 4i (SFF-8654) AIC

Features

- ※ SlimSAS 4i (SFF-8654) to PCI Express 4.0 x4 convert
- ※ Built- in SFF-8654 connector, pin-out defined by SFF-9402 Rev1.1
- ※ Built- in PCIe 4.0 ReDriver to extend PCIe x4 data width link signals
- ※ Built- in PCIe 100MHz Clock buffer to drive longer trace lengths and longer cable
- ※ Built- in PCIe SMBus bidirectional buffer repeater
- ※ Built- in PERST# Bus Buffer Gate to be used over longer trace lengths and over longer cable
- ※ Built- in WAKE# Bus Buffer Gate to be used over longer trace lengths and over longer cable
- ※ Built- in CLKREQ# Bus Buffer Gate to be used over longer trace lengths and longer over cable
- ※ Built- in PWRBRK# Bus Buffer Gate to be used over longer trace lengths and longer over cable
- ※ D3 Green LED on indicates AIC ready

Specifications

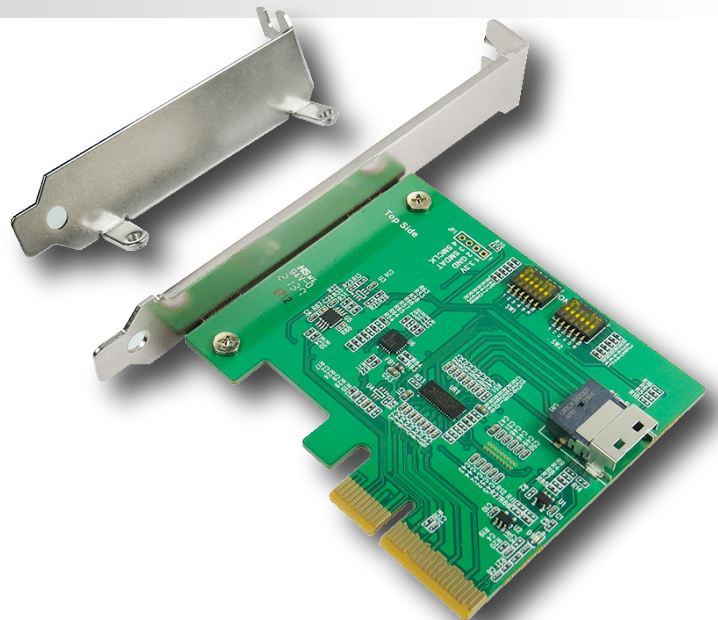
- ※ PCI Express Base Specification Rev 4.0
- ※ PCIe_CEM_SPEC_R4_V1_0_08072019_NCB
- ※ Support SSD_Form_Factor_Version1_a
- ※ Compliant with SFF-8654 Specification Version 1.2

Operating system support

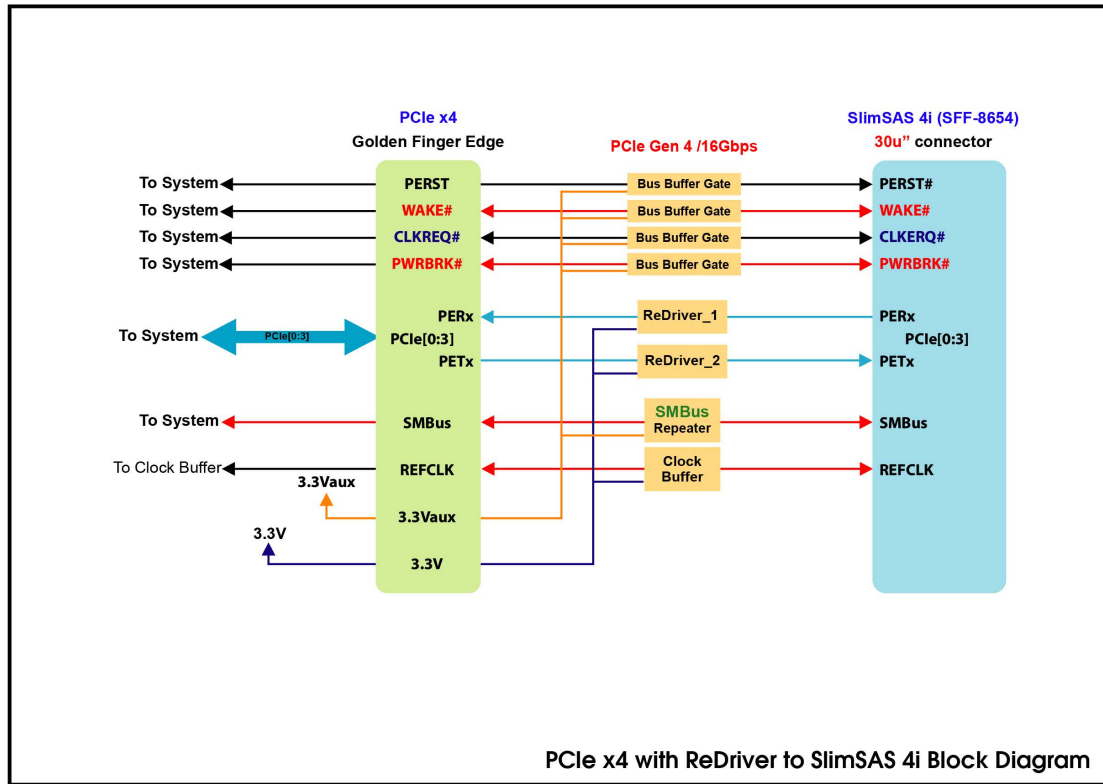
- ※ Windows 7
- ※ Windows 8 &8.1
- ※ Windows 10
- ※ UEFI 2.3.1 or later

Applications

- ※ Rack server
- ※ Microserver and Tower server
- ※ High performance computing
- ※ Hardware accelerator
- ※ Storage Controller HBA(Host Bus Adapter)
- ※ Desktop PC/motherboard



PCIe x4 Gen4 with ReDriver to SlimSAS 4i (SFF-8654) AIC



The switches settings are as noted below

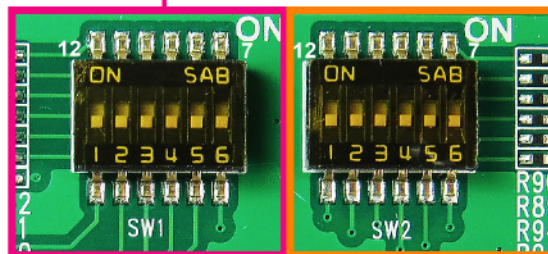
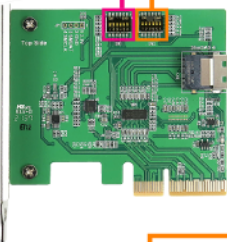
SW1	1-12	Output Swing Setting	on	0
	2-11	Flat Gain Setting	off	1
	FG0		on	0
	3-10		off	1
	FG1	on	0	
	4-9	Equalization Setting	off	1
	EQ0		on	0
	5-8		off	1
	EQ1		on	0
	6-7	EQ2	off	1

800 mVp-p
1200 mVp-p

Flat Gain Setting		
FG1	FG0	dB
0	0	-3.5
0	1	-2
1	0	-0.5
1	1	1

Equalizer Setting (dB)						
EQ2	EQ1	EQ0	@1.25GHz	@2.5GHz	@4GHz	@8GHz
0	0	0	0.2	1.0	2.3	5.6
0	0	1	0.2	1.1	2.6	6.2
0	1	0	1.8	2.7	3.9	7.0
0	1	1	2.1	3.3	4.8	8.5
1	0	0	3.0	4.2	5.8	9.4
1	0	1	3.2	4.6	6.5	10.4
1	1	0	4.3	5.8	7.8	11.7
1	1	1	4.5	6.5	8.8	13.0

Model No. DP9402
PCIe x4 Gen 4 with Redriver
to SlimSAS 4i (SFF-8654) AIC



SW2	1-12	Output Swing Setting	on	0
	2-11	Flat Gain Setting	off	1
	FG0_1		on	0
	3-10		off	1
	FG1_1	on	0	
	4-9	Equalization Setting	off	1
	EQ0_1		on	0
	5-8		off	1
	EQ1_1		on	0
	6-7	EQ2_1	off	1

800 mVp-p
1200 mVp-p

Flat Gain Setting		
FG1	FG0	dB
0	0	-3.5
0	1	-2
1	0	-0.5
1	1	1

Equalizer Setting (dB)						
EQ2	EQ1	EQ0	@1.25GHz	@2.5GHz	@4GHz	@8GHz
0	0	0	0.2	1.0	2.3	5.6
0	0	1	0.2	1.1	2.6	6.2
0	1	0	1.8	2.7	3.9	7.0
0	1	1	2.1	3.3	4.8	8.5
1	0	0	3.0	4.2	5.8	9.4
1	0	1	3.2	4.6	6.5	10.4
1	1	0	4.3	5.8	7.8	11.7
1	1	1	4.5	6.5	8.8	13.0